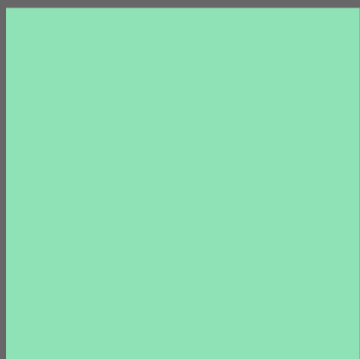


PRIMETHOR





OUR COLLECTION OF
CONTEMPORARY HOME DESIGNS

BROCHURE



Section I

■ Who We Are



Prime Experience

Primethor is a full-service residential-led property development company with an objective to deliver beautiful, comfortable and quality homes across the Nigerian market at an exceptional value. For years, the indigenous real estate landscape has been adrift with words like luxury, premium, sustainable and more recently smart homes. At Primethor, we believe all these adjectives are contextual. They mean different things to different people. Our prime focus always is to choreograph experiences that people would love to come back to. A clear mandate being to develop destinations that draws inspiration from life and demonstrates elegance, harmony and balance. Across our real estate projects, our focus is to create unique residential communities where no two experiences are alike. At Primethor, we measure our success by how we exceed our clients expectations repeatedly, not against margins and quantity of homes built.





Contemporary living
In the Metropolitan
Abuja landscape




Section II

■ Standalone Home Designs





Development Overview

 Mabushi, Abuja	 1.24 ha Estate Size	 20 Units Standalone	 456 m2 Plot Size
 182 m2 Built Area	 2 Living Room	 6 Bed	 7 Toilets
 4 Park			

Amenities

- Uninterrupted Power Supply
- Fibre Optic Connectivity
- Estate recreational area
- Elevator (optional)
- Expansive balconies
- Additional multi-purpose enclosure for gym/cinema/study.
- Modern Water Treatment Facility
- 24 hours Surveillance
- High Tech Access Control
- 2 Servants Quarters
- Smart Street Lights
- Facility Management Services

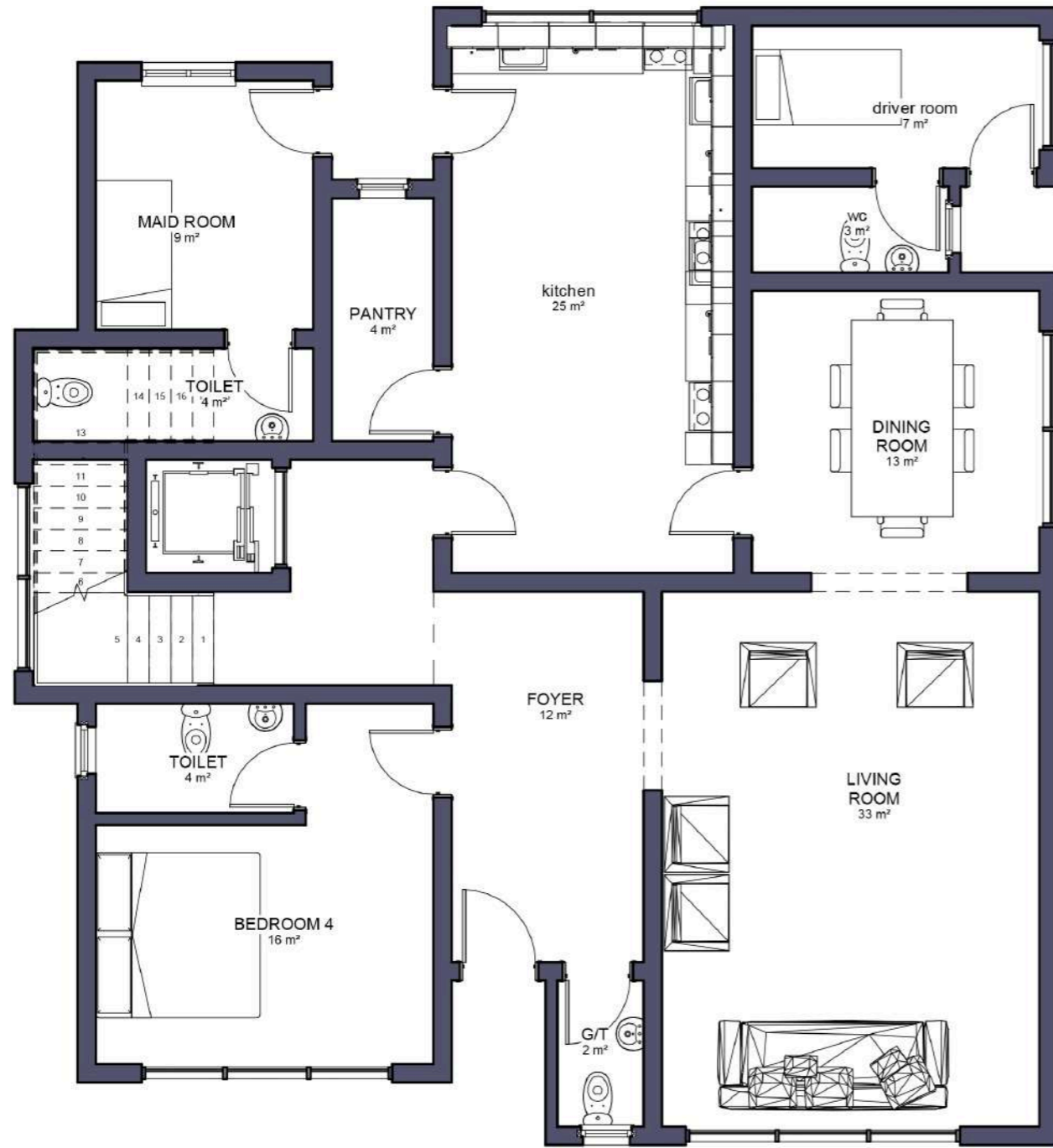
Matt's Ville

Located on a serene environment opposite the BluCabana Restaurant & Café, Matt's Ville benefits from a superb central location that sits within the heart of Abuja.

The property is perfectly placed to easily traverse the city of Abuja, with excellent transport links to principal commercial, leisure and shopping areas.

Key Dates

Stage of Construction	Commencement of Construction	Completion Period	Sunset Clause
Pre-sale/ Off the plan	June 2022	24 Months	See Contract



Ground Floor



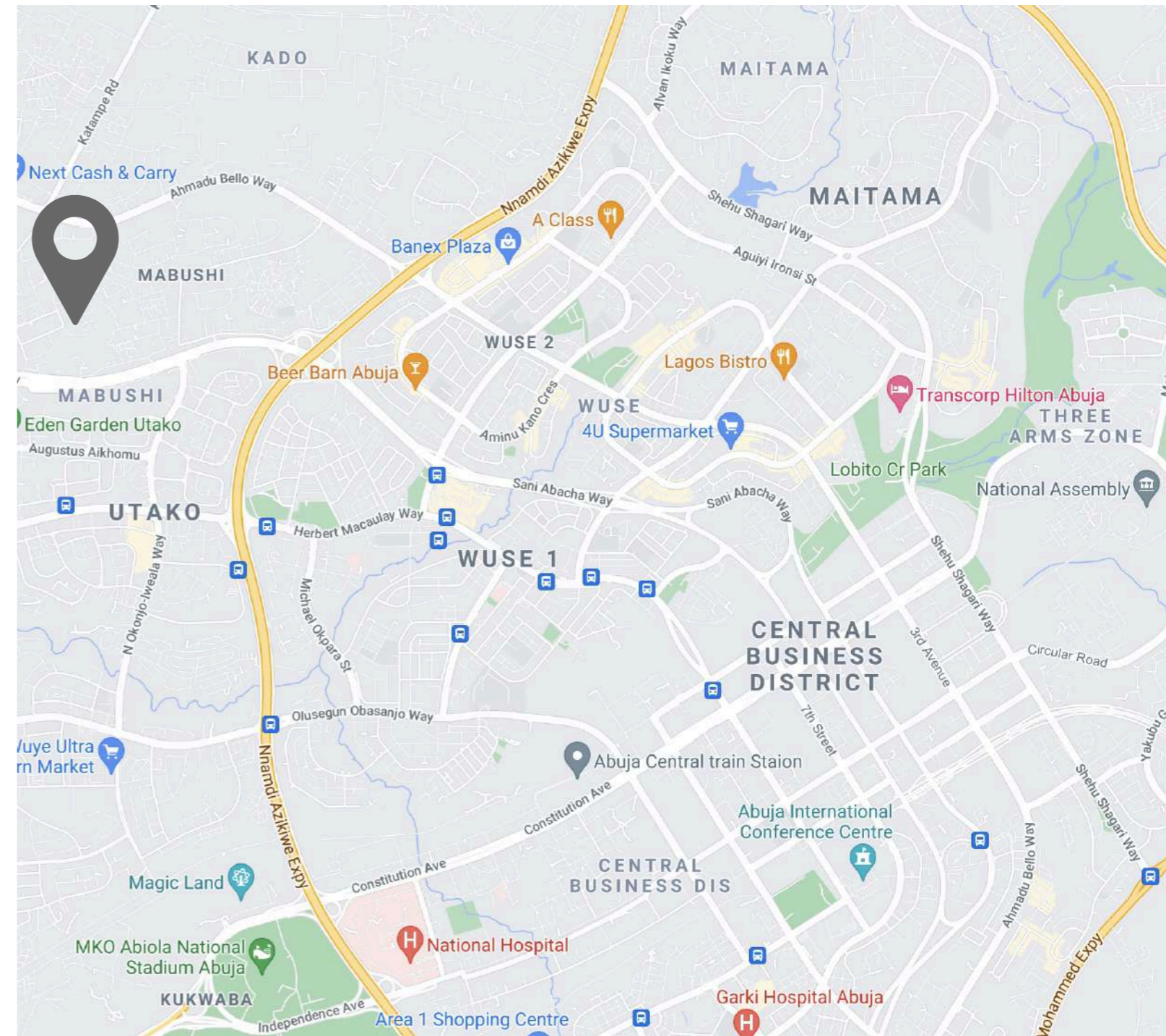
First Floor



Second Floor



Wuse	10 mins
Central Area	12 mins
Maitama	17 mins
Asokoro	19 mins
Airport	35 mins



Luke's Villas









Luke's Villas

Nestled in the beautiful Katampe District suburb, Luke's Villas is ideally situated in one of Abuja's most premier locations with great transport connections.

Each one of the 6-bedroom homes is designed to an exceptional specification with an attention to detail that promises discerning buyers a superior level of quality and convenience.

This development is designed for families seeking an exceptional environment for their dream home.

Development Overview

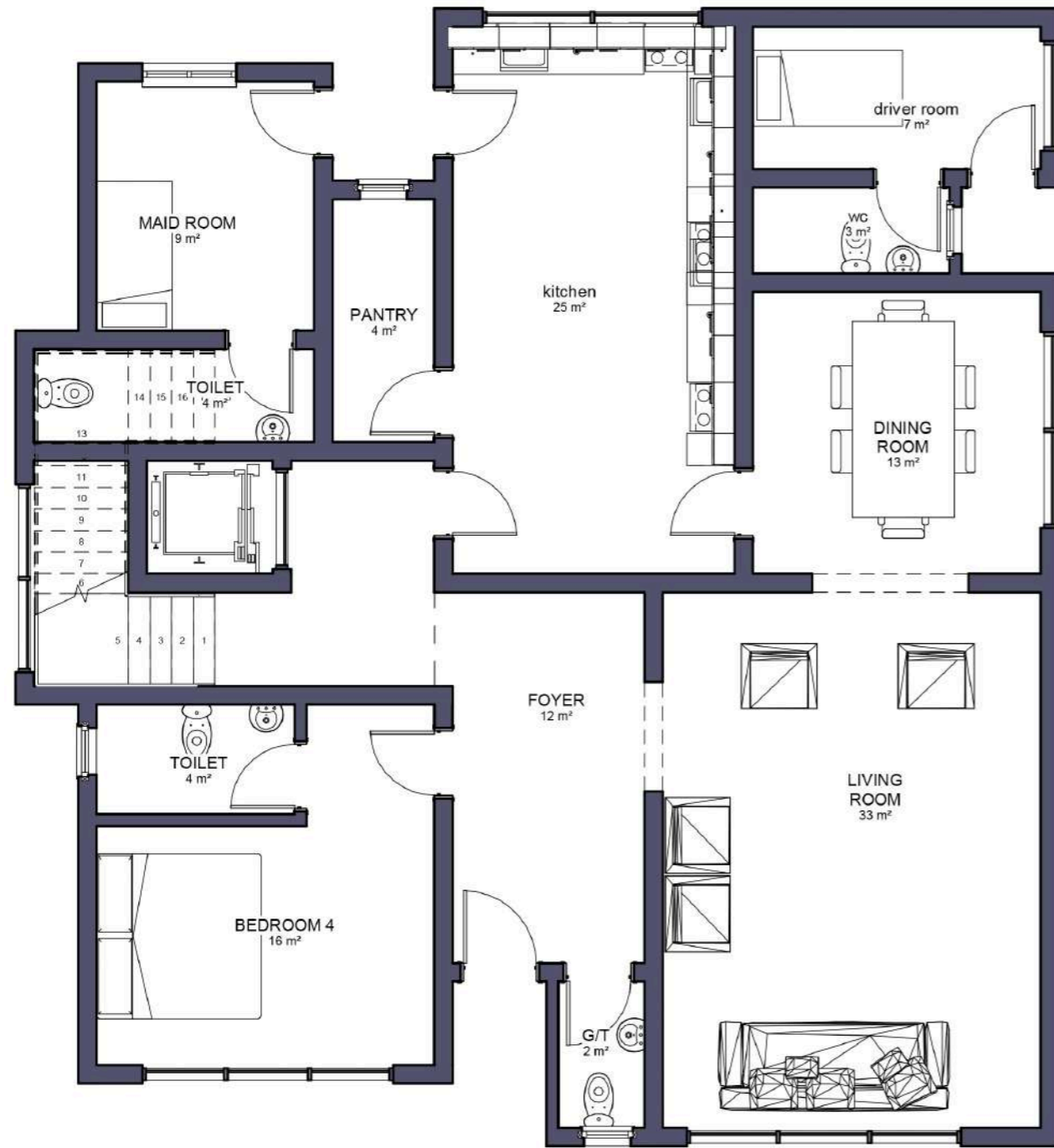
 Katampe, Abuja	 3,935 m2 Estate Size	 7 Units Standalone	 484 m2 Plot Size
 176 m2 Built Area	 2 Living Room	 6 Bed	 7 Toilets
 4 Park			

Amenities

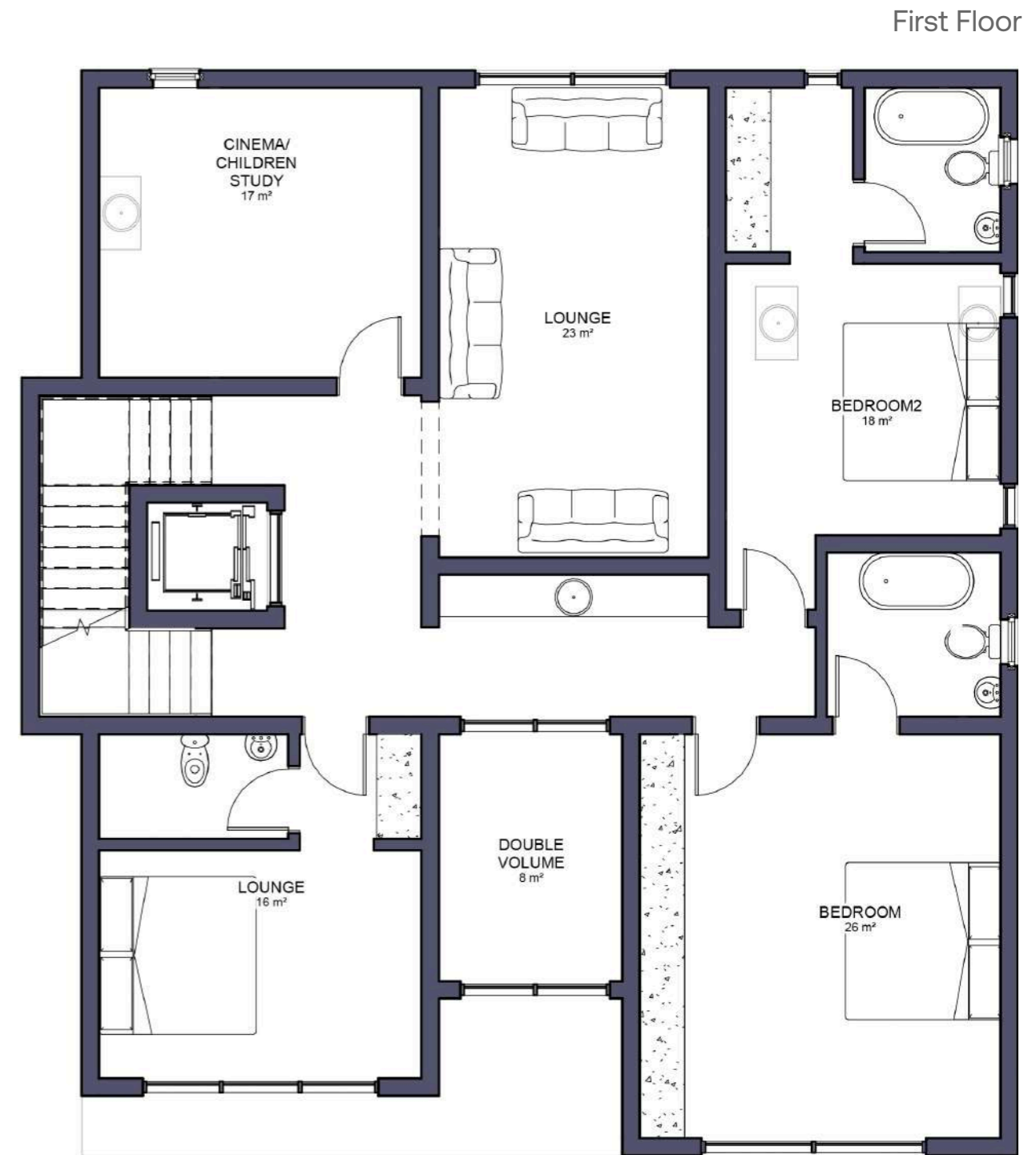
- Uninterrupted Power Supply
- Fibre Optic Connectivity
- Estate recreational area
- Elevator (optional)
- Expansive balconies
- Additional multi-purpose enclosure for gym/cinema/study.
- Modern Water Treatment Facility
- 24 hours Surveillance
- High Tech Access Control
- 2 Servants Quarters
- Smart Street Lights
- Facility Management Services

Key Dates

Stage of Construction	Commencement of Construction	Completion Period	Sunset Clause
Pre-sale/ Off the plan	June 2022	24 Months	See Contract



Ground Floor



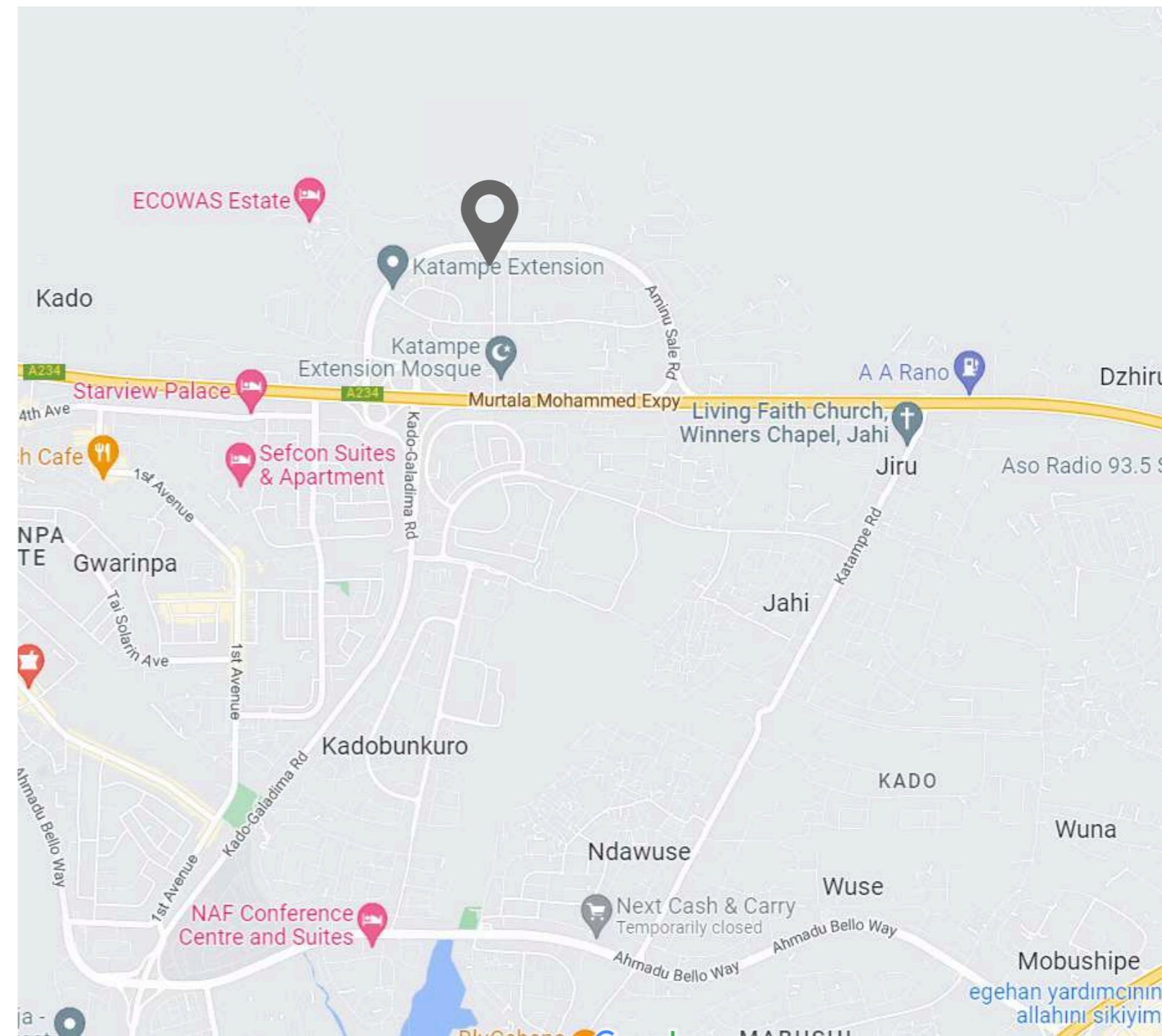
First Floor



Second Floor



Wuse	13 mins
Central Area	15 mins
Maitama	15 mins
Asokoro	17 mins
Airport	42 mins














Section III

■ Terraced Home Designs





Development Overview

 Guzape, Abuja	 1,500 m2 Estate Size	 4 Terraced Apartments	 529 m2 Plot Size
 106m2 Built Area	 2 Living Room	 4 Bed	 5 Toilets
 2 Park			

Amenities

- Uninterrupted Power Supply
- Fibre Optic Connectivity
- Facility Management
- Private Backyard Access
- High Tech Access Control
- Expansive First Floor Lounge
- Modern Water Treatment Facility
- 24 hours Surveillance
- Private Backyards
- Maid Room

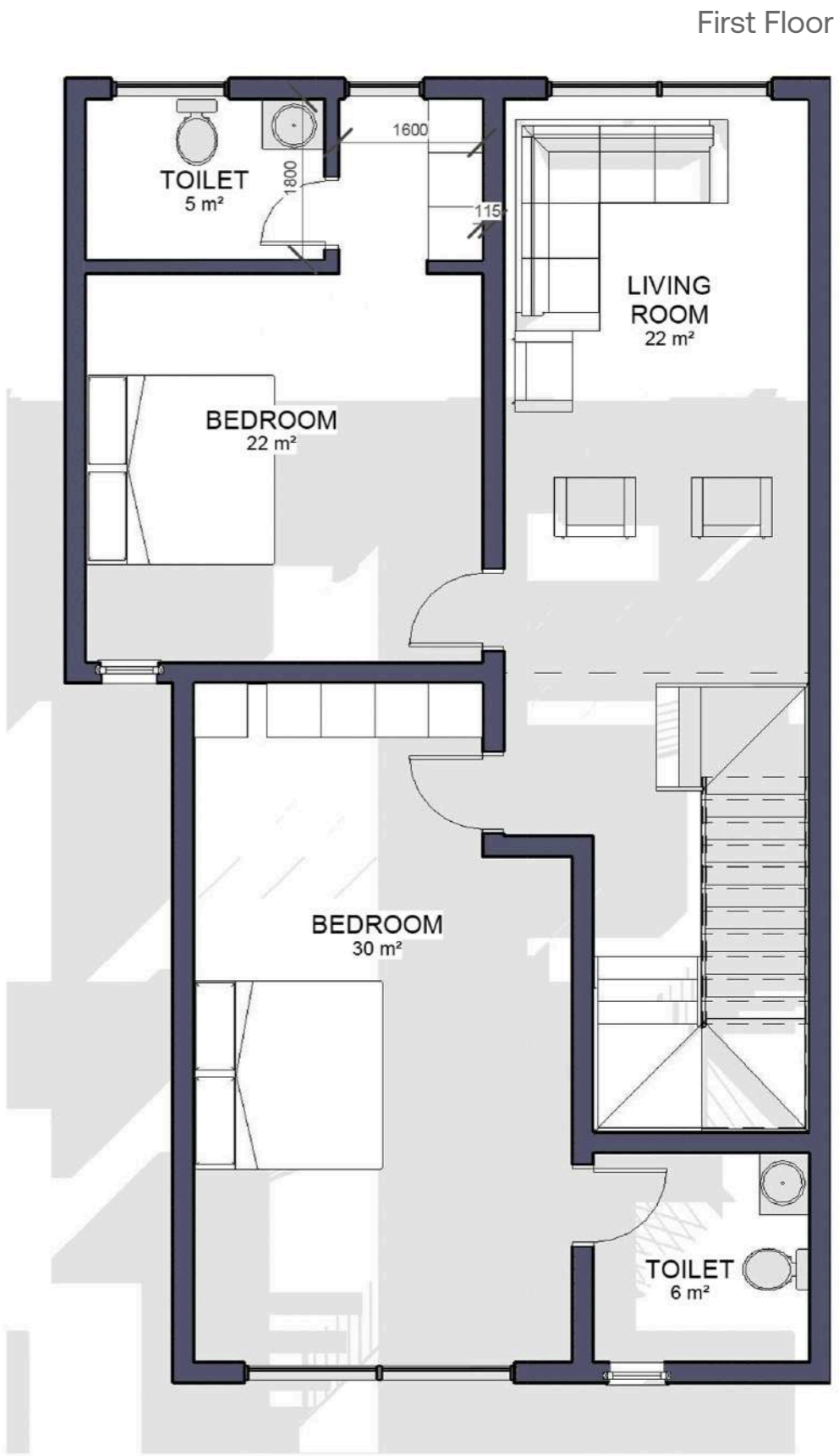
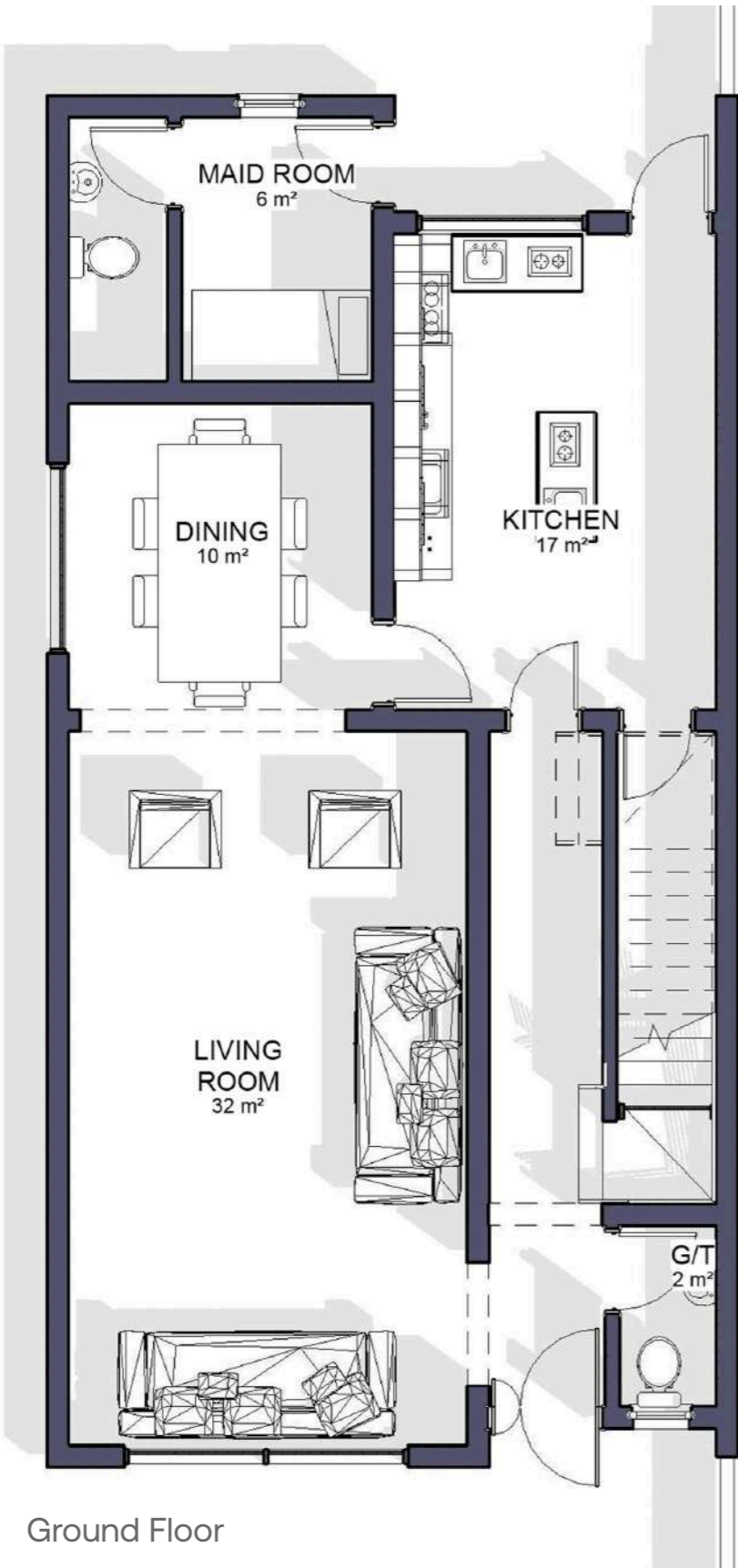
MacHill Terraces

MacHill Terraces is a four-bedroom, two-storey terraced apartment situated in Guzape. This home is targeted at modern families who value their privacy and convenience.

Markhill was designed and developed with both function and form in mind. Owners will enjoy the spacious comfort of contemporary living that extends out into a private backyard. Markhill Terraces is a home that appeals to all generations.

Key Dates

Stage of Construction	Commencement of Construction	Completion Period	Sunset Clause
Pre-sale/ Off the plan	June 2022	18 Months	See Contract

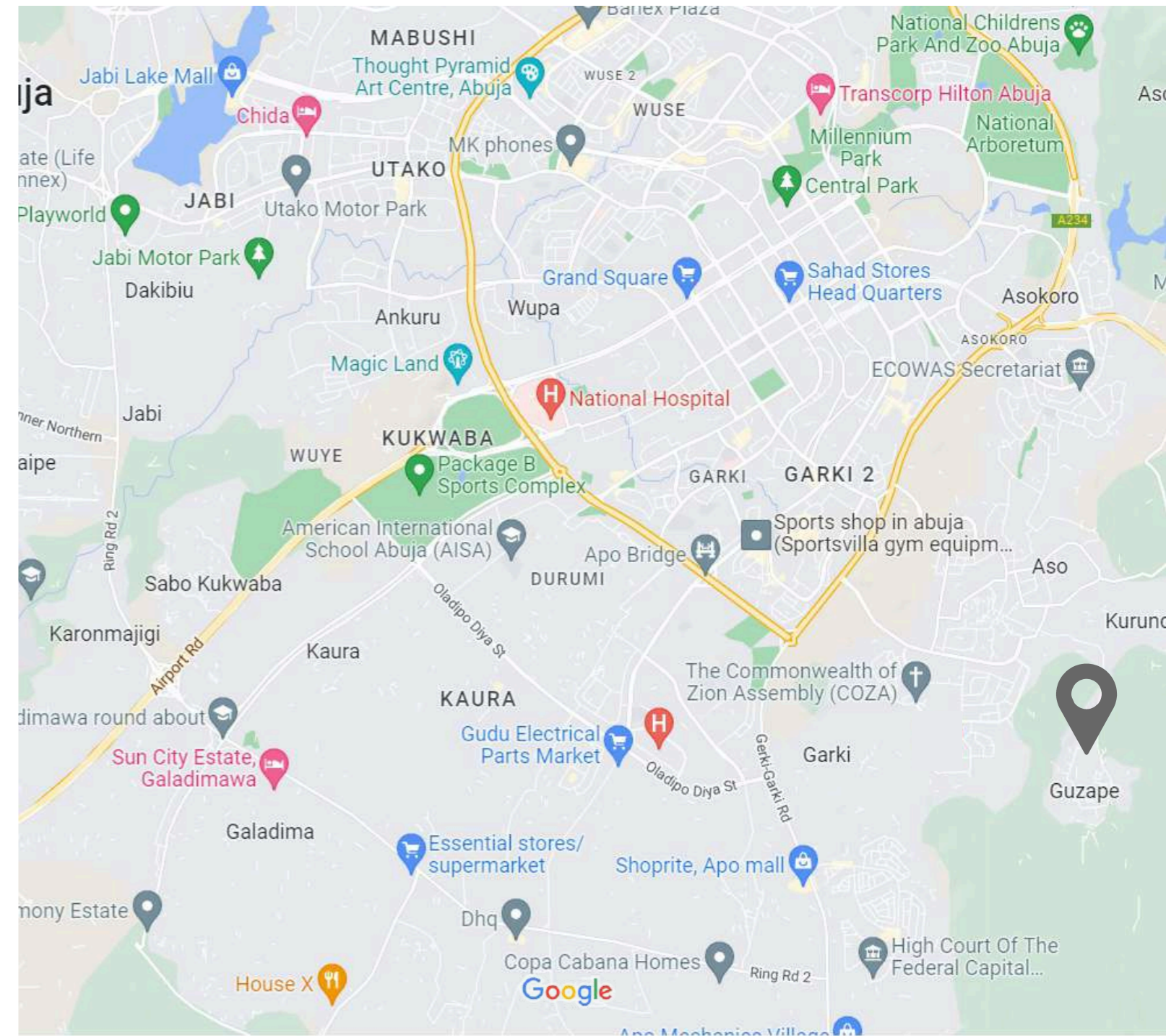




Second Floor



Wuse	17 mins
Central Area	12 mins
Maitama	19 mins
Asokoro	10 mins
Airport	46 mins





Contact

081 7111 1122

www.primethor.com

info@primethor.com

© [f](#) [t](#) primethorng

5, Kikuyu Close, off Nairobi Street
Parakou Crescent, Wuse II, Abuja

Fine print:

This brochure and the information contained in it does not form any part of any contract, and while reasonable effort has been made to ensure accuracy, this cannot be guaranteed and no representation of warranty is made in that regard. The specification provided are only the anticipated specification as at the date of this brochure was prepared, but may be subject to change in accordance with permitted variances under the sale contracts.

Computer generated images and photos are indicative only. All sales remain subject to contract.